



Eonland Product Catalog

Applied to Distributed Solar Energy Storage Systems



01 Company Profile

01

02 Products

Microinverter

Specification 06

Cluster-Connection 07

Cloud Monitoring 09

All-in-one Micro-Storage System

Specification 12

03 Application Scenarios

Balcony & DIY Solar System 13

Residential Solar Power & Energy Storage System 14

Industrial & Commercial Solar Power System 15





Eonland - Better One from Innovation

As a subsidiary company of Powerland,
Eonland offers various distributed solar power and energy storage solutions
with microinverter as the core product.

The excellent R&D team and competence
have provided a solid foundation for the development of Eonland.



Founder

Dr. Ming Xu

Associate Professor at Virginia Tech

Chief Scientist at Virginia Tech's Center for Power Electronics Systems (CPES)

Senior Member of IEEE

60+ US Patent, 150+ academic papers



Powerland

Global Leading Supplier of Power Electronics
and Renewable Energy Solutions

10⁺

10+ years manufacture
experience

6

6 PhD

40⁺

40+ Masters

130⁺

130+ R&D experts

Powerland Group is a leading power conversion company, providing full service and solutions for electric vehicles, industrial, medical and other high-end power electronics applications, where efficiency, reliability, lifetime, and power density are the primary challenges. Under the leadership of power electronics scientists from one of the top research laboratories in the world, CPES-Virginia Tech, Powerland has become the largest power electronics design house in China. Powerland is globally recognized and respected as an innovative high-technology, reliable and capable firm in customizing robust and unique power supplies.



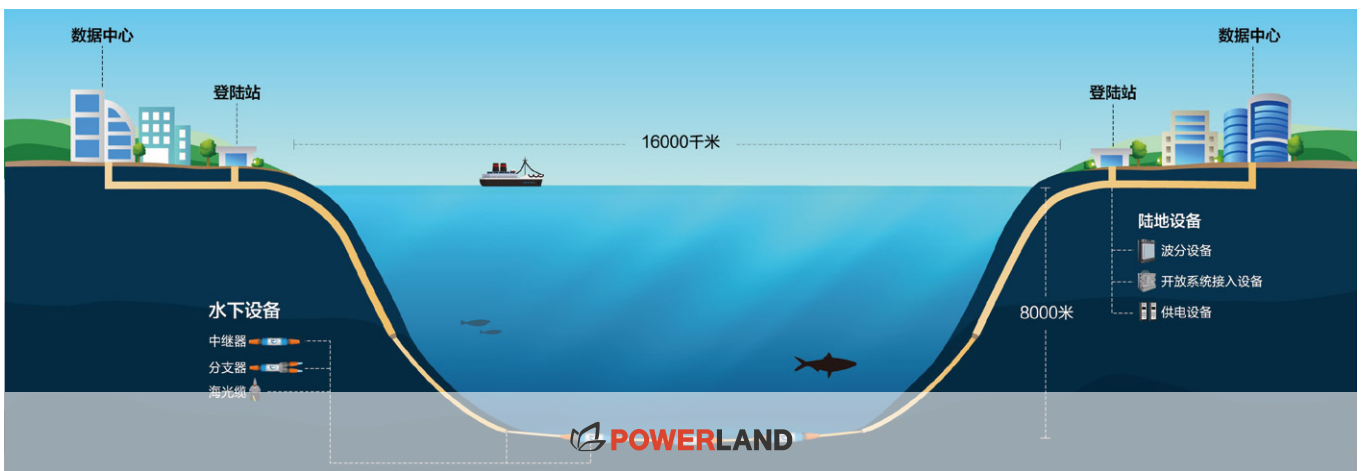
■ We Never Stop Chasing for Excellence



■ Being Efficient & Reliable, We Are Very Experienced



■ High-End Customized Power and Long Life Cycle

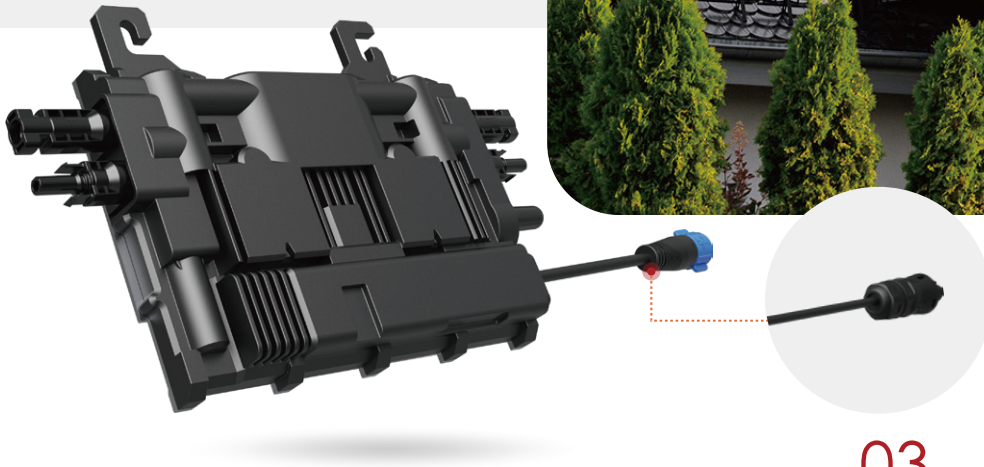


Reliable Manufacturing



Microinverter

Eonland Microinverter, with industry-leading power density, efficiency and reliability, is the result of the cutting-edge technology and craftsmanship that the group has developed in power electronics. Relying on the reliability design results of similar products, Eonland Microinverters take the lead in offering longer warranty.



01

Smaller, Lighter, Higher Power Density

35% smaller and 25% lighter than the industry benchmark

02

Strong Compatibility

Modular installation, suitable not only for residential applications but also for megawatt-level commercial and industrial scenarios

03

Faster, Safer and Flexible Installation

Innovative installation engineering design with patent

04

More Reliable

High-reliability design with longer warranty

05

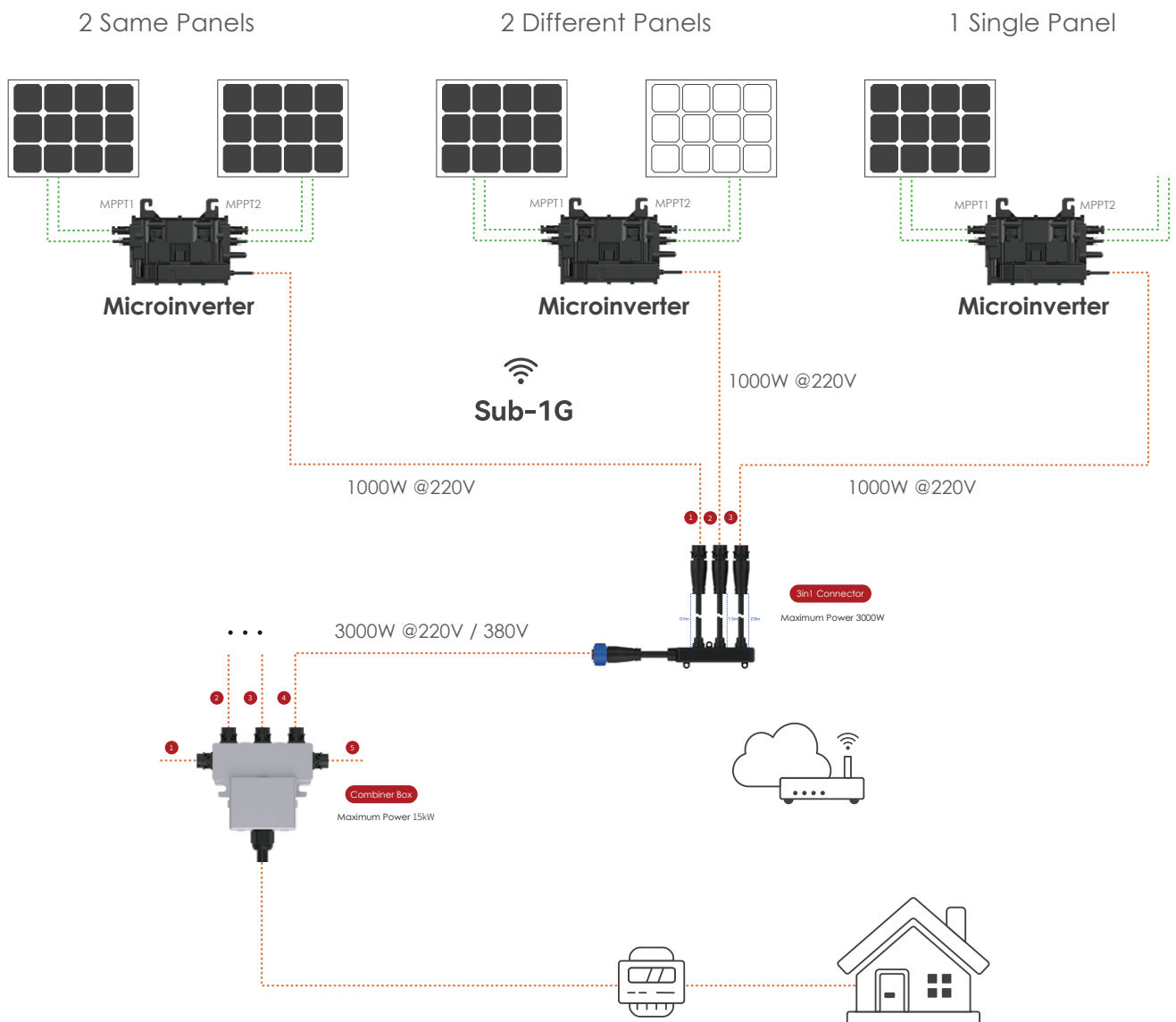
Supports Multiple Communication Methods

Supports both Sub-1G and Wi-Fi 2.4G/5G

Specifications

Model	EON-MI1000S-2A	EON-MI800S-2B	EON-MI800S-2C
Input Data (DC)			
Commonly used module power	400~670W	320~590W	320~590W
Maximum input voltage	Min.16, Typ.42, Max.60V		
Start-up voltage	Min.18, Typ.19, Max.20V		
MPPT voltage range	Min.16, Typ.42, Max.60V		
Maximum input current	2 x 16A		
Maximum input short circuit current	2 x 22A		
Number of MPPT	2		
Number of input	2		
Output Data (AC)			
Rated output power	1000VA	800VA	800VA
Output current range	0~4.7A	0~3.48A	0~3.48A
Output voltage	Typ. 220V	Typ. 230V	Typ. 230V
AC frequency range	47.5~51.5Hz		
Total harmonic distortion	Typ. < 3%, Max. < 5%		
Power factor (adjustable)	> 0.99 default 0.9 leading...0.9 lagging		
Efficiency			
Peak efficiency	96.5%		
MPPT efficiency	99.8%		
Night Consumption	<50mW		
Environmental and Mechanical Characteristics			
Operation temperature	-40 ~+65 °C		
Ingress protection	IP67		
Cooling	Natural convection		
Nominal Dimensions	228×150×31.3mm		
Nominal weight	2.4kg		
Features			
Communication	Sub-1G	Sub-1G	Wi-Fi 2.4G/5G
Compliance	IEC/EN 62109-1/-2, NB/T 32004: 2018, EN 50549, VDE-AR-N 4105-2018 UTE C15-712-1:2013/ VFR 2019/ DIN VDE 0126-1-1:2013-08 CEI 0-21:2022-03, IEC/EN 61000-3-2/-3, IEC/EN 61000-6-1/-2/-3/-4		

Cluster-Connection



Cluster-Connection Accessories

With prefabricated plug and play accessories, you can connect your solar system quickly, easily, flexibly and reliably.



CC-01

3 in 1 Connector

3 microinverters are in one cluster. Adaptable for either single-phase or three-phase system by using 3 in 1 connector.

The length of the three input wires are 2.8m, 1.5m and 0.5m, and the lengths of the output wire is 0.5m.



CB-01

Combiner Box

A combiner box can connect up to five 3 in 1 connectors.



EC-01/04/08

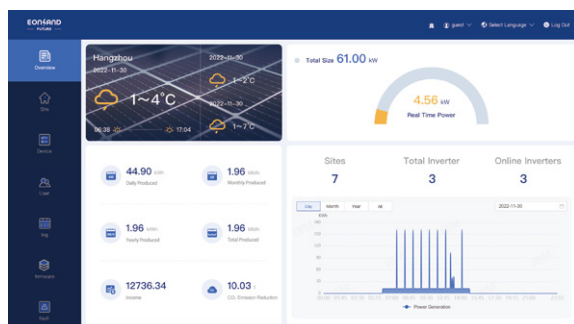
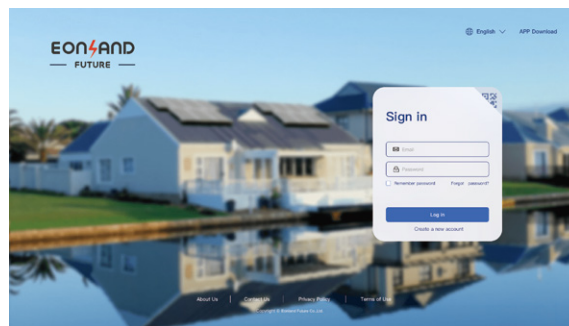
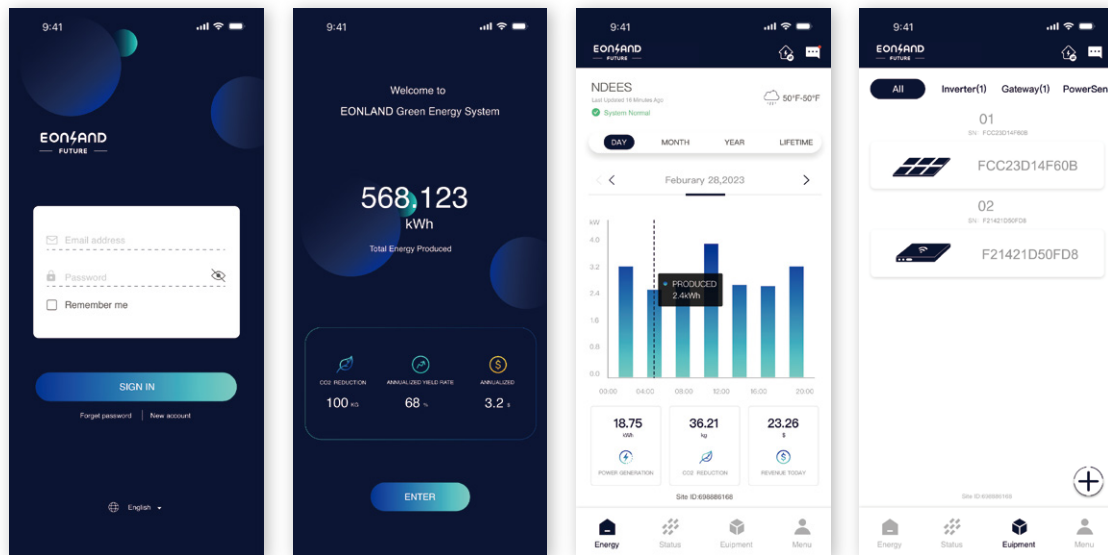
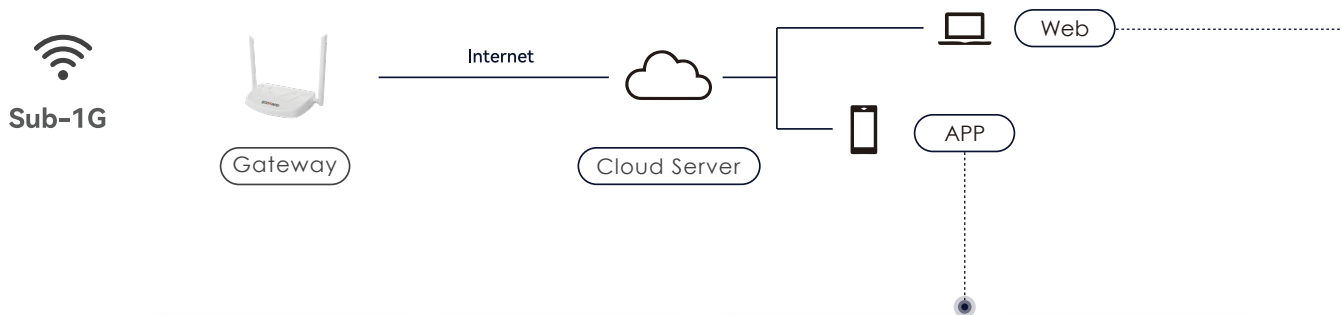
AC Extension Wires

AC extension wires with prefabricated connectors. Used to connect the 3 in 1 connector and the combiner box. The standard lengths are 1m, 4m and 8m.

Cloud Monitoring

Suitable for Sub-1G communication devices

One gateway accesses up to 100 microinverters



The image displays a screenshot of the EONLAND desktop application interface showing a list of inverters. The table has columns for Inverter ID, Site Name, Inverter Name, Capacity, Country, Region, Power Meter, SPS, Creation Time, Update Time, Working Status, and SPS.

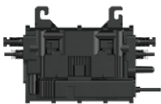
Inverter ID	Site Name	Inverter Name	Capacity	Country	Region	Power Meter	SPS	Creation Time	Update Time	Working Status	SPS
00101020704	001010204	001010204	2500	China	Guangdong	001010204	001010204	2020-10-10 10:10:10	2020-10-10 10:10:10	Online	0
00101020705	001010204	001010205	2500	China	Guangdong	001010205	001010205	2020-10-10 10:10:10	2020-10-10 10:10:10	Online	0
00101020706	001010204	001010206	2500	China	Guangdong	001010206	001010206	2020-10-10 10:10:10	2020-10-10 10:10:10	Online	0
00101020707	001010204	001010207	2500	China	Guangdong	001010207	001010207	2020-10-10 10:10:10	2020-10-10 10:10:10	Online	0



Cloud Monitoring

Suitable for Wi-Fi 2.4G/5G communication devices

Wi-Fi 2.4G/5G



Microinverter

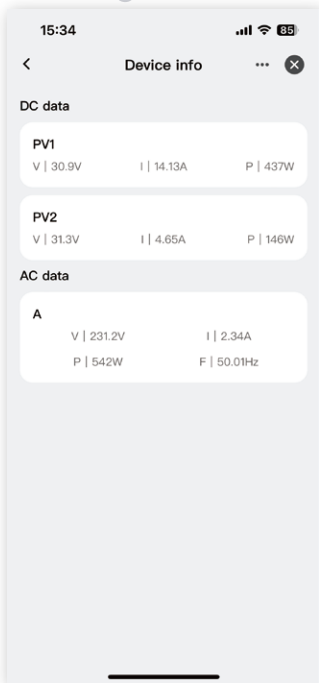
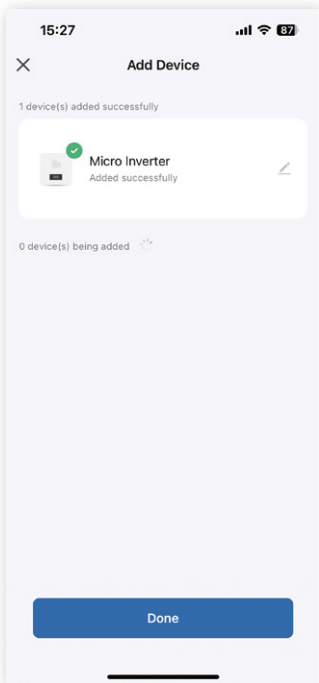
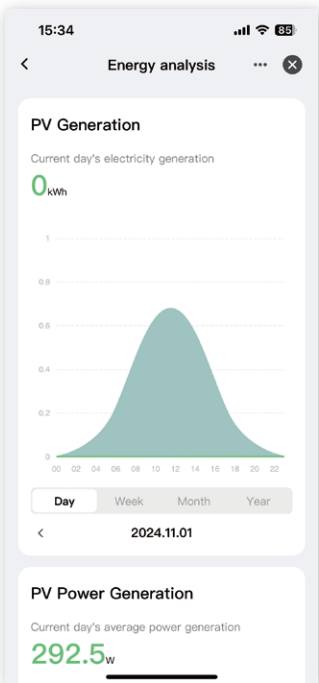
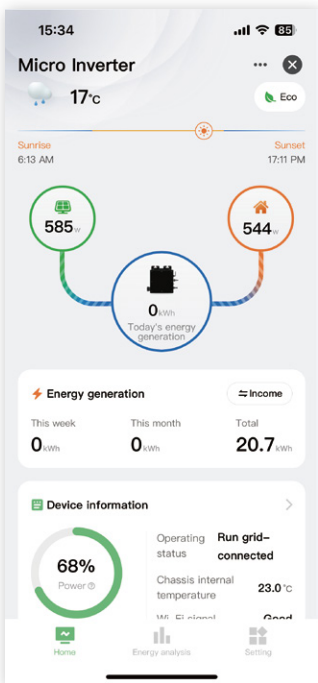
Internet



Cloud Server



APP



All-in-one Miro-storage System

CBE2000

The new balcony energy storage system features an integrated design, making installation simple and convenient. Equipped with a smart cloud platform, the system supports dynamic pricing and real-time energy consumption calculations, allowing users to monitor energy usage statistics anytime, providing an intelligent energy management solution.

With a high cycle life (over 6000 cycles) and IP65-rated protection, the system ensures safety and durability, making your green energy lifestyle easier and more efficient.



01

Real-time Monitoring

Smart App remote control

02

Integrated Unified Design

03

Minimalist Installation

04

High Cycle Life

Over 6000 cycles

05

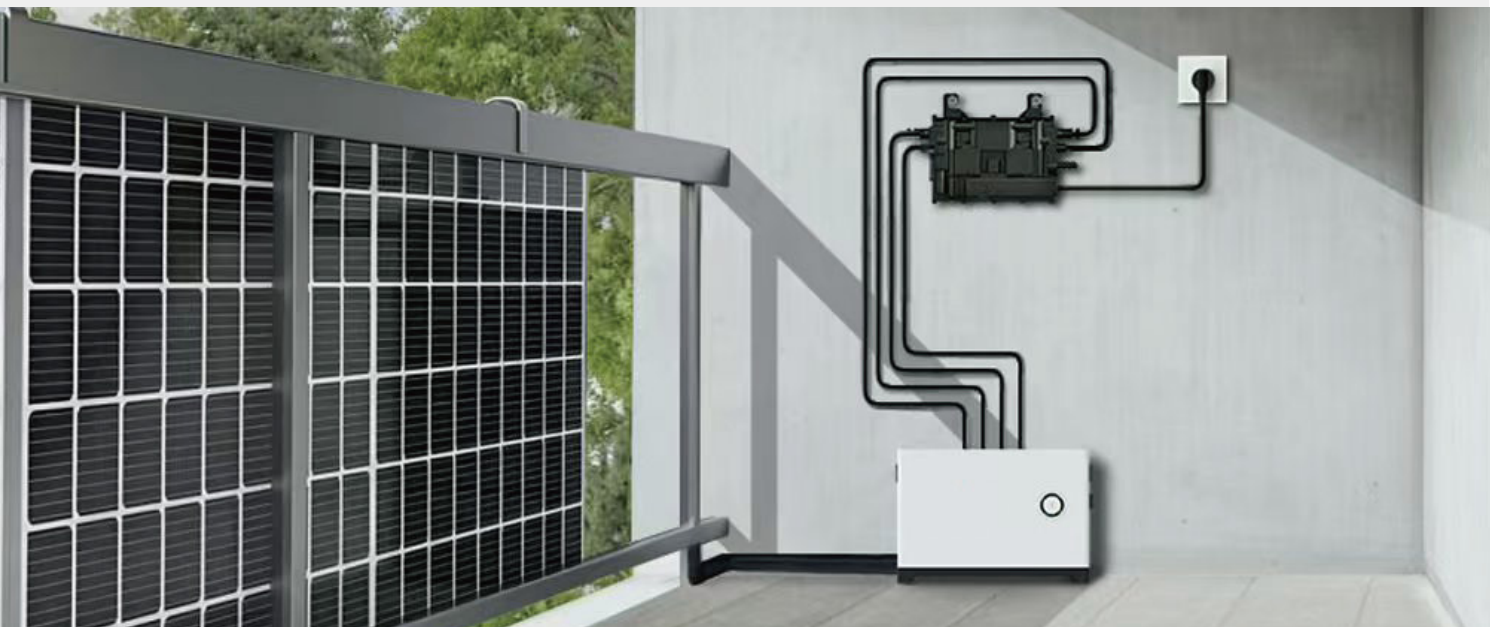
IP65-rated for Protection

Specifications

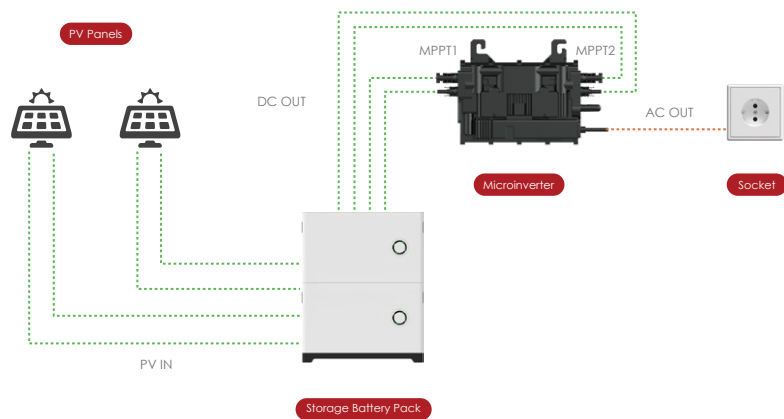
Model	CBE2000
Battery Data	
Capacity	2048Wh
Rated Voltage	51.2 V (2P16S)
Life Cycle (Times)	> 6000 (25°C)
Battery Type	LiFePO4
DOD	90%
Input Data (PV)	
Input Power	2*800 W
Input Voltage	12 V ~ 60 V
Max. Input Current (Single)	20±0.5 A
Number of MPPT	2
Output Data (AC)	
Rated Output Power	800 W
Output Voltage	220/230/240 VAC (Single-phase)
AC Frequency Range	47.5 Hz - 51 Hz
Total Harmonic Distortion	Typ. < 3%, Max. < 5%
Power Factor (Adjustable)	> 0.99 default 0.9 leading...0.9 lagging
Efficiency	
Max. Output Efficiency	97%
MPPT Efficiency	99%
Communication	
Wi-Fi & Bluetooth	
Environmental and Mechanical	
Operating Temperature Range	-20 °C ~ +55 °C
Storage Temperature Range	-30 °C ~ +65 °C
Enclosure Rating	IP65
Cooling	Natural convection
Dimensions	450 mm × 350 mm × 190 mm (W × H × D)
Weight	25 kg
Regulatory	
Compliance	IEC/EC62109, IEC/EC62619, VDE-AR-N 4105-2018 IEC/EC 61000-3-2/-3 EN300328, UN 38.3

Balcony & DIY Solar System

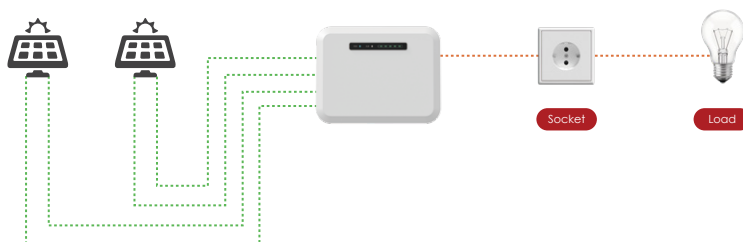
Compact, stylish, and easy to install, supporting DIY flexible design, and delivering efficient power generation



◆ Split System ◆

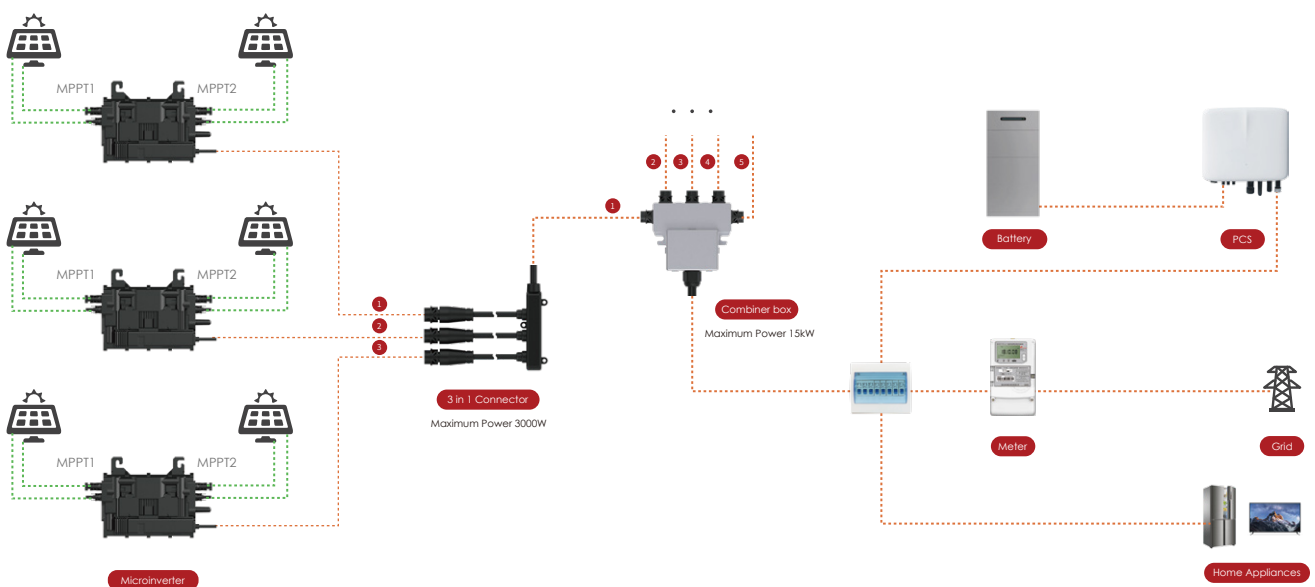


◆ All-in-one System ◆



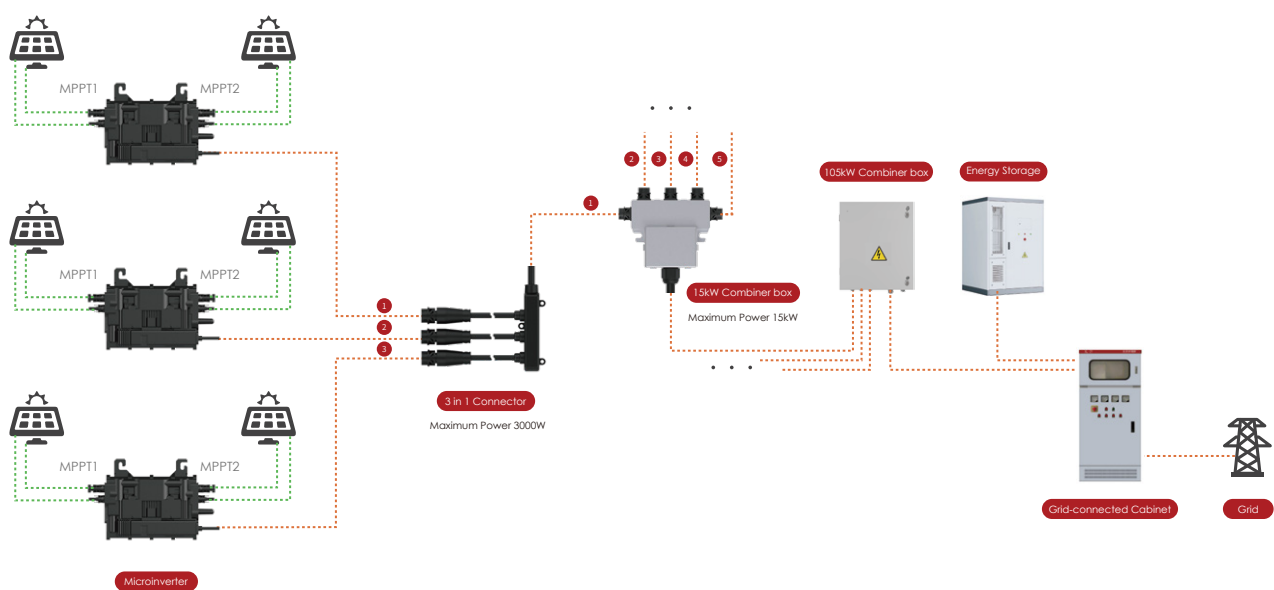
Residential Solar Power & Storage System

Compact, aesthetically pleasing, and easy to install, with high-efficiency power generation.
Real-time monitoring and asset management ensure stability and safety.
Adaptable to various environments with high protection standards.



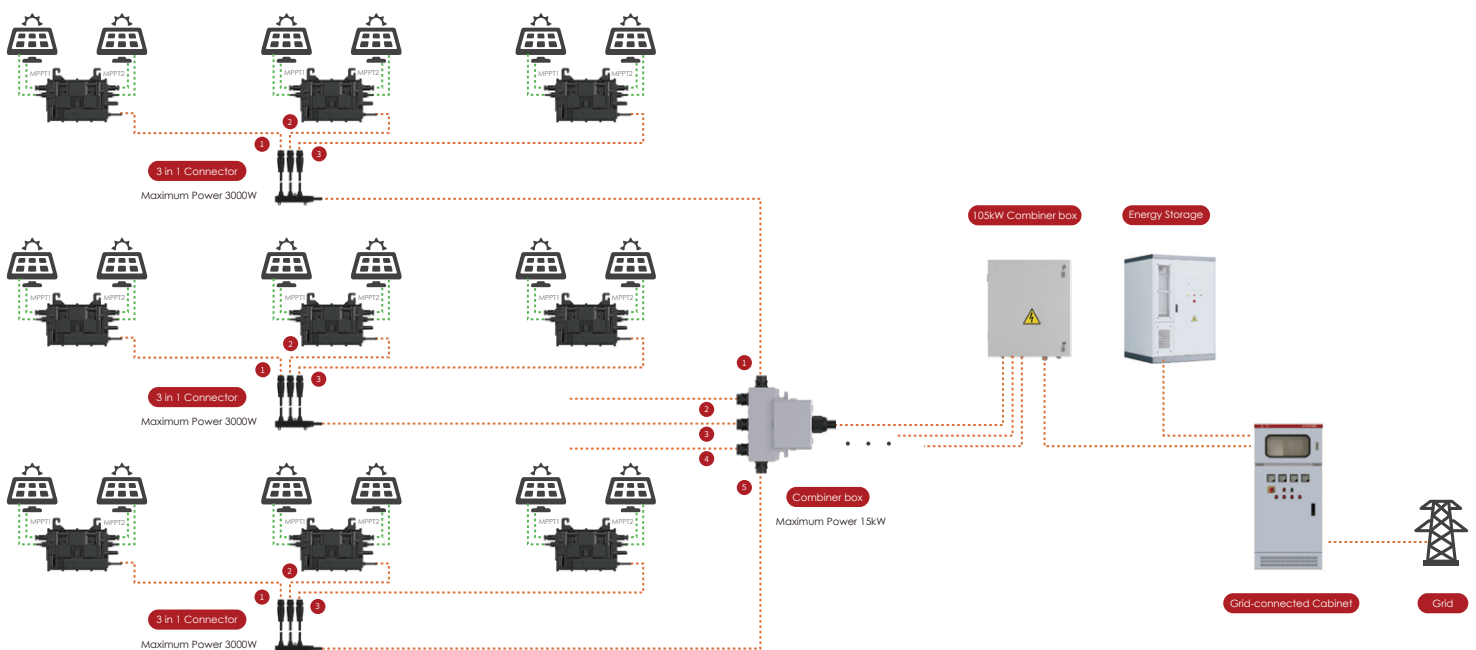
Industrial & Commercial Solar Power System

Module-level power optimization enhances energy generation efficiency, while intelligent and convenient operations and maintenance, along with module-level monitoring, support asset management. This ensures high safety and stability of the power system, extending its lifespan.



Scalable Networking up to 2MW Capacity

Module-level power optimization enhances energy generation efficiency, while intelligent and convenient operations and maintenance, along with module-level monitoring, support asset management. This ensures high safety and stability of the power system, extending its lifespan.



Application Case

No.1 Wuxi Villa 6KW Project

Capacity 7.3 kW
QTY 6 pcs
Date 2024.04.19



No.2 Shanghai Villa 6KW Project

Capacity 6.1 kW
QTY 6 pcs
Date 2024.07.11



No.3 Pujiang Garment Factory 50KW Project

Capacity 54.5 kW
QTY 50 pcs
Date 2024.02.02



No.4 Wuxi Die Forging Factory 38KW Project

Capacity 46 kW
QTY 38 pcs
Date 2024.03.26



No.5 Jiaxing Food Factory 24KW Project

Capacity 29 kW
QTY 24 pcs
Date 2024.05.20



No.6 Yueyang Grain Barn 132KW Project

Capacity 159.7 kW
QTY 132 pcs
Date 2024.05.21



No.7 Wuxi Jinlun Plaza 114KW Project

Capacity 138.5 kW
QTY 114 pcs
Date 2024.07.15



No.8 Lianyungang Polymer Materials Chemical Plant 107KW Project

Capacity 161.3 kW
QTY 107 pcs
Date 2024.08.15



Learn more about **Eonland**



Scan with Wechat



Scan with Camera

Eonland Future Co.,Ltd

Web www.eonlandfuture.com

E-mail eonlandsales@powerlandtech.com

Phone 025-85582306 Ex6312

Address Room 818, Chongan Center, 303 Pingshui St,
Gongshu, Hangzhou, Zhejiang, China

CopyRight ©2024.Eonland Future Co., Ltd. All rights reserved.